

IMMERSIVE
ART
C O N C E P T

JOALI



ARTSCAPE AT JOALI MALDIVES

Welcome to the first and only art-immersive luxury island resort in the Maldives. Designed around the idea of sustainable glamour, our Island of Joy is home to 73 spacious villas and residences.

Art is everywhere at JOALI Maldives. Experiential artworks unfold across our island, inviting you to experience a creative dialogue between international art forms and indigenous influences, craftsmanship and materials.

As a responsible luxury brand, JOALI also aims to support the local community and revive Maldivian artistic traditions — a wonderful initiative to take part in while you soak up the bliss of island life.

Brimming with opportunities for inspiration and joy, JOALI Maldives is an interactive art destination for dreamers, creators and wonder-seekers. Are you ready to embark on your creative adventure?

“Art is an expression of the soul.
It inspires, liberates and transforms.”

ART IS AN EXPERIENCE

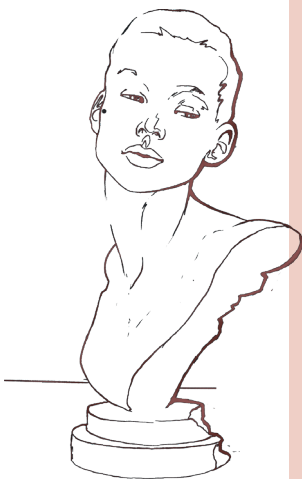
Here at JOALI Maldives, we believe that the value of art extends far beyond its role as show pieces. At its best, art should be immersive. It should spark curiosity, illuminate perception and inspire insight.

Art isn't just meant to be seen — it is meant to be *experienced*.

As you interact with our one-of-a-kind installations, you will become part of a creative dialogue between international art forms and indigenous influences, craftsmanship and materials.

Be transported to a wondrous realm on the wings of creativity. Pause, gaze and reflect. Soak in the essence of each piece and artist, and let them speak to your soul.

“The light is different here...
it feels like a dream.”



ART & NATURE

“Revel in the creative spirit of nature.”

The Island of Joy is home to pieces that capture and conserve nature, both materially and visually.

The distinctive natural setting of JOALI Maldives is imaginatively reflected in the artworks through motifs, shapes, colours, materials and craftsmanship.

Some artists created their masterpieces on-site, working closely with architects, engineers and locals on the island. Others made special pieces or adapted their existing works to JOALI's immersive art concept and tropical climate.

With sustainability at the heart of our resort, it was important for art to coexist harmoniously with nature. Accordingly, based on their individual style and visual impact, the artworks have been placed in carefully chosen locations around JOALI Maldives. Each creation is thus thoughtfully integrated into its natural surroundings.





Designed by HOICK

ART MAP

Embark on a creative treasure hunt across our island!

The Art Map invites you to set off on an immersive and interactive journey — at your own pace.

Discover our island-wide collection of unique artworks and learn more about the story behind each piece. The Art Map also provides insight into the creative vision and process of each artist.

JOALI

PORKY HEFER

South Africa

Porky Hefer is a vernacular artist who explores traditional techniques, crafts and materials to create functional objects with modern relevance. He mimics and references the natural world and is known for collaborating with local craftsmen. His imaginative, nature-inspired works blend functionality, style and a message of conservation.

Hefer challenges our relationship with everyday objects, inspiring us to look at things again — and with new eyes. He focuses on conceptual precepts, which manifest in three-dimensional forms in a variety of executions, from public sculpture to product and furniture design.

Hefer spent 16 years in advertising, during which he worked as a Creative Director in Cape Town and New York agencies and became one of South Africa's most awarded creatives. In 2007, he left advertising to start a creative consultancy. Four years later, he founded Porky Hefer Design.



“The grey heron is the best-known visitor bird of the Maldives. Very often birds are the first resident or visitors to island. This one migrated from Africa. Kara prefers the Maldivian weather and cuisine. Kara has decided to stay.”

PORKY HEFER

South Africa

Did you know the Maldives is home to over 5,000 reef manta rays, the largest known population in the world? Taking inspiration from these fascinating marine residents, this artwork is a marvellous expression of vernacular architecture.

Hefer employs traditional techniques, crafts and materials to create a functional space with modern relevance. Suspended among the treetops and woven with natural materials, this astonishing hideaway also offers a whimsical venue for private dining.



Manta Treehouse – Bushra

Location: Jungle



Heron Chair – Kara

Location: Mura Beach

Overlooking the beach, the hanging chair displays Hefer's signature passion for local wildlife and endangered species.

The grey heron is the best-known visitor bird of the Maldives as well as JOALI's spirit animal. Very often, birds are the first residents or visitors to islands. This one migrated from Africa. Kara prefers the Maldivian weather and cuisine. Kara has decided to stay.

ZEMER PELED

United States

Nomadic artist Zemer Peled examines the beauty and brutality of the natural world through her creations. Her sculptural language is formed by her surrounding landscapes, engaging with themes of nature and memory, identity and place. Her artworks are formed of thousands of porcelain shards constructed into small- and large-scale sculptures and installations.



Crafted with thousands of porcelain shards, Peled's dramatic sculpture comments on the issue of coral bleaching affecting the region, with striking bursts of colour against a stark white background reflecting hope for future regeneration.



“Maldives Vibes is inspired by the rich underwater world of Maldives. The intricate, delicate coral forms and the beautiful colours of the multitudinous organisms that call it home.”

Maldives Vibes
Location: JOALI BEING Cure

CHRIS WOLSTON

United States

Based in New York, Chris Wolston explores the material vernacular of the modern day and the fetishization of process. Inspired by manual techniques and the regional contrasts between his Brooklyn and Medellin studios, Wolston creates works that demonstrate playful adaptations of materials, often mixing high- and low-tech processes. He received his Bachelor of Fine Arts from the Rhode Island School of Design and a Fulbright grant to Colombia.



Terra Cotta Furniture
Location: In front of
Maison De JOALI



Inspired by his past experience working in a Colombian brick factory, Wolston has created a set of clay chairs where the finger marks of the artist can still be seen. The use of this motif emphasises the importance of human influence in the production process.

Combining traditional techniques with playful fabrication, these items simultaneously embrace and protest functionalism. Residing outside the JOALI Boutique, the intricately detailed chairs contrast with the lush fauna around them. At the same time, they appear in harmony with their surroundings owing to the use of terra cotta, a natural material.

Take a seat, won't you?

"JOALI - I couldn't imagine a better natural habitat for my work to live. As I began to look around the city more closely, I noticed these hand marks smeared across facades of the buildings and walls everywhere. I thought it would be interesting to use these finger marks to cover the surface of work like a glaze or paint."

DOUG JOHNSTON

Canada

Doug Johnston's work oscillates between art and design, primarily utilising a process of coiling and machine-stitching cordage based on ancient vessel-building techniques. His main interest lies in building a formal vocabulary that engages in architecture, spatial and landscape formation, commerce, and fundamental human technologies.

Since 2010, Johnston has been focused on a process of coiling and stitching rope using industrial sewing machines, eventually leading to the production of a wide range of functional and sculptural objects. His work utilizes a long history of human technologies such as cordage, coiled vessels, bags, basketry, masonry construction, sewing machines, and 3D printing. Originally from Canada, Wolston now resides in Brooklyn, the "hidden" side of the Big Apple.



Lamp

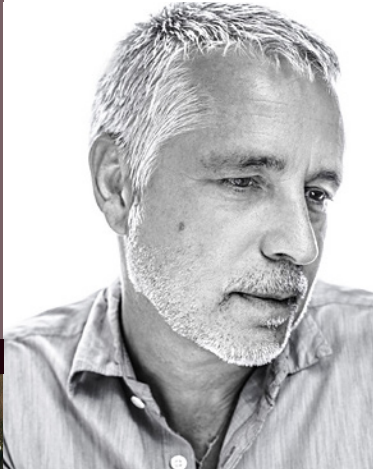
Location: Inside Maison De JOALI

Located inside the JOALI boutique, Doug Johnston's organic-shaped light shades reflect the textures and waves of the island. Made from coiled rope, stitched using industrial sewing machines, they demonstrate skills gleaned in masonry construction, 3D printing, basketry and cordage. These unique light shades invite you into an immersive experience. Look up, relax and "feel" the ocean waves...

"In creating these pieces for JOALI, I wanted to help draw guests into an immersive experience in which they can relax and feel the waves and textures of the island."

JOHN-PAUL PHILIPPE

United States



The Perch

Location: JOALI Airport Lounge

“The bench of JOALI is a perch,
a point of rest and reflection for
both Humans and Birds.”

The work of John-Paul Philippe is grounded in divining the abstract and the natural realms in which he is immersed. A modernist artist, designer, and aesthete, he strives to find the essence of what the world wants to reveal and then reflect it in his work.

Philippe's creations range from paintings and murals to large-scale interior design elements such as integrated metal sculptures. Born in Oklahoma, he now spends his time between the cities of New York and Sharon.

Adding a touch of timelessness to the natural landscape with his abstract style, Philippe has created a special “JOALI” version of his celebrated bench.

Through this installation, Philippe beckons the spirit of the island, the genius loci, to reveal itself, so that those who come to seek rest can slip into a state of reverie.



MISHA KAHN

United States



Working at the intersection of design and sculpture, Misha Kahn creates objects whose function is masked by the unusual assemblage of elements used to create them. Kahn designs his objects by hand with unorthodox materials such as pool noodles and fishing wire and often produces the final work through digital means, creating an interplay between the handmade and the technological.



A crafter of “delusional objects”, Kahn explores interesting forms and covers them with compositional and enticing surfaces. His works are known to contain little surprises that reveal themselves over time.



Tropicana Table

Location: Mura Beach



The astonishing forms and colours of coral are beautifully expressed through this communal table, inspired by the vibrant artistry of Antoni Gaudi. The perfect spot for sunset drinks and experiential dining overlooking the ocean.

“Coral is a delicate symbiotic system, just like art is with colour and form. I drew inspiration from the waters around the island and favourite artists from the past like Gaudi and Nicki de Saint Phalle.”

NACHO CARBONELL

Spain

Known for his tactile approach to sculpture, Nacho Carbonell plays with texture, experimental techniques, and natural materials. His approach is unique, seeing objects as 'living organisms' that come alive and surprise you with their behaviour.

For Carbonell, forming a relationship with his work is integral: he creates "communicative objects" with his hands in order to impart something of his personality to them. The mission of his objects is to "hybridise" with the user, to become one or to have a union.

Carbonell hails from the Spanish city of Valencia in the Mediterranean, the land of oranges and sun, but is now based in Eindhoven in Netherlands, the land of rain.



Evolution Chair

Location: Mura

Recreated specially for JOALI with materials like sand and tree sap, Carbonell's iconic Evolution chair has been adapted for the tropical climate. The cocoon-like chair offers a private moment of quiet introspection to anyone seated in its depths.

The chair embodies the principle of being with others, while also being immersed in yourself, in your own individual identity. In other words, it is a place for dialogue — and for shelter.



"It's an object that uses the principle of being with others but being immersed with yourself; with your own individual identity. It's a place to dialogue and it's a shelter."

SOOJIN KANG

South Korea

Arising organically from an early affiliation with nature, Soojin Kang's interest in nature-inspired creativity eventually led her to thread artistry. Kang believes there is a fundamental need for humans to rediscover the art of handcrafting furnishings with needle and thread using existing materials — rather than constantly purchasing newly-made items.

Utilising antique raw materials that are available in very limited quantities, Kang crafts one-of-a-kind furnishings with traditional craft techniques. Originally from South Korea, “the land of morning calm” she is now based in London.



Housed in our Four Bedroom Beach Residence, these elaborate thread tapestries are handwoven exclusively with natural materials. The scale of the pieces accentuates the high ceilings, with long strands flowing artistically down the wall.

Crafted by Kang through a meditative process, the tapestries reflect a fusion between the modern and the traditional. Note how the contemporary look contrasts with the time-honoured composition of materials.



Rawness
Location: Villa 6

“I feel happy but jealous that my piece will be living on a beautiful island. It was a meditative process that I enjoyed creating a fusion between contemporary image and the material’s traditional, physical composition.”

REINALDO SANGUINO

Venezuela



Mini Stools
Location : Mura Bar

The works of ceramicist Reinaldo Sanguino are vehicles for his memories, daily experiences and imaginings of the future. Like a life journal, his creations carry “mementoes” that can be shared wherever they travel.

Born in Venezuela, Sanguino first fell in love with clay during his time at the School of Visual Arts Cristobal Rojas in Caracas, from where he graduated with a focus on ceramics.

Now based in New York City, Sanguino has exhibited throughout the United States and South America and has been awarded multiple national and international grants. He is especially known for his much-coveted clay stools.

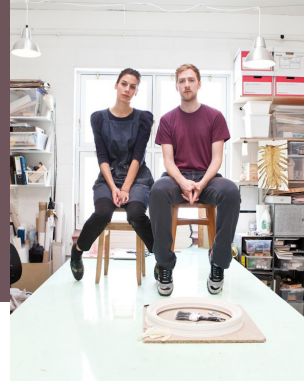
Inspired by the fabled table-top Tepuis mountains of Venezuela and the forms of heritage hourglasses, these clay stools are crafted with mud from the rivers of the Guiana Highland region. Sanguino views them as vessels that carry his past, and now breathe the wonderful air of the Maldives!

The vibrant stools are designed to last for many years, absorbing the warmth of the sun and the tales of the guests who enjoy sitting on them as time passes by. They are ready to befriend you and listen to your stories....what will you tell them?

“These works at JOALI are vessels that carry my past, they now breathe the air of the Maldives and their surfaces will absorb the heat of this wonderful island, they will now listen to stories and befriend the guests as they age and live.”

STUDIO GLITHERO

England & Netherlands



Glithero is the creative partnership of British designer Tim Simpson and Dutch designer Sarah van Gameren, who met while studying at the Royal College of Art. From their studio in London, they create unique and wonderful objects and installations that are the result of meticulous experimentation and material invention.

The work bridges the fields of art, design and craft, but follows a consistent conceptual path: to capture and present the beauty in the moment things are made.

Committed to designing 'systems' that animate and extend the making process, Glithero's approach is informed by notions of time, curiosity and attention to detail. Their works are often time-based and transformative: objects become happenings, and happenings become objects.



Silverware Vases & Botanical Tiles

Location : Bellinis



These stunning creations reflect Glithero's attempt to preserve a moment in the life of individual plant specimens from JOALI Maldives. An echo of the way the designers feel about the wider Maldives ecosystem.

"We used photographic techniques and traditional hand drawing techniques to capture the most subtle flora of the Maldives on our ceramics. Our attempt to preserve a moment in the life of a single plant specimen from JOALI is an echo of the way we feel about the wider Maldives ecosystem."

ARDMORE CERAMICS

South Africa

Ardmore Ceramics was founded by Zimbabwean-born ceramic artist Fée Halsted. The story began in 1985 on the Ardmore Farm, at the foothills of the Drakensberg mountains in South Africa, where Fée started teaching ceramics to a talented group of rural residents. Later that same year, 18-year-old Bonnie Ntshalintshali, who was born on the farm, began a ceramics apprenticeship under Fée.

The two women quickly developed a flourishing creative partnership, which became the bedrock of Ardmore's success. Today, the studio is home to over 70 African artists whose ceramic works have been acknowledged as modern-day collectables by auction houses like Christie's and Sotheby's.

The unique artwork for JOALI was created by Catherine Berning and Sidney Nyambeze, both Ardmore designers from South Africa who are drawn to colourful and fantastical ceramics that embrace African fauna and flora.

This striking work represents the emblematic grey heron found on the island, coupled with the romance of fragrant frangipanis and mystical mangroves. Through their creativity, the designers of Ardmore evoke the exoticism and remoteness of our tropical location.

Mirroring the flight and elegance of seabirds, the Maldivian Heron offers a lovely welcome to our Island of Joy! This pattern has also been adapted by No LaB for the carved panels found in all guest villas, Bellinis, Vandhoo, and Arrival Jetty.



Grey Heron
Location: Arrival Jetty



"I was drawn to JOALI's vision of an exotic gateway and was overwhelmed and honoured to be asked by JOALI to create an exclusive, one-off design for this luxurious lodge in the Maldives. I dream of seeing my creativity come to life in this tranquil setting. This design is the romance of fragrant Frangipani and the humid mangrove coupled with the flight and elegance of sea birds."

SOPHIE KITCHING

England & France

Renowned for her paintings, installations and sculptures, artist Sophie Kitching explores landscape as an active medium, intertwining nature and architecture, territory, and memory, the seen and unseen.

A graduate of the École nationale supérieure des Arts Décoratifs in Paris,

BVLGARI 5th Avenue (New York); Palais de Tokyo and FRAC Grand Large (Paris); and Messums London. Her works are in the collections of Morgan Stanley, Daniel Humm, Jeppe Hein, Demi Moore and private collectors worldwide.

Kitching has collaborated with Maison Ruinart for

several events, notably Frieze New York 2022. During her immersive residency at JOALI Maldives in partnership with Maison Ruinart, she created a series of unique artworks inspired by the light and lush nature around her. Intrigued by the invisible world of the Indian Ocean, Kitching captures our island's serene yet vibrant atmosphere through her signature brushstrokes, colourful palettes, and expressive motifs.



Invisible World
Location: Mura Bar

“I was fascinated by the sunlight dancing across the turquoise waters, illuminating vibrant fish and corals. I seek to capture this fleeting beauty, a reflection of my first encounter with the unseen world beneath us.”

Composed of abstract, overlying brushstrokes, this artwork reveals a tension between the seen and unseen. Drawing on her fascination with JOALI's natural surroundings, Kitching paints intricate interplays of colour on the canvas surface, while delving into the representation of light and shadow. The painting features a distinctive tone of green invented in the Regency era in England, unique to this series.

Step into a visual encounter with the lightness and beauty of the “invisible world” around our island. Feel the sunbeams reflected on the turquoise waters, highlighting the kaleidoscopic hues of fish and corals. Colours emerge and dissolve, much like sunlight filtering through palm fronds or the soft shimmer of waves meeting the shore, unfolding the artist's vision.



FELEKSAN ONAR

Turkey

Feleksan Onar (Fy-Shan Glass Studio)

Istanbul-based glass artist Feleksan Onar is known for creating “magic with glass”. Her expertise ranges across several techniques, including blowing, casting, fusing, lamp-working and cold-working. Her perennial muse is Pera, a fascinating neighbourhood in Istanbul, where she can easily get lost chasing her dreams down the colourful and chaotic streets.

In 2011, Onar founded Fy-shan Glass Studio with the aim of designing and producing limited-edition functional art, sculptural objects and lighting. The studio’s collections are inspired by a wide range of sources, and also benefit extensively from Onar’s artistic career as she continues to exhibit her work in destinations like Berlin, Stockholm, Venice and New York.



Glass Collection
Location: In Villas

Channelling her gift for forming glass into intricate objects, Onar has crafted a signature collection of tropical-inspired creations for JOALI Maldives. Glass objects such as pink-tinged decanters cast in the shape of a pineapple or coral bring a playful touch of artistry to your in-villa minibar experience.

SECKIN PIRIM

Turkey

Simplicity and minimalism define the creative approach of Seckin Pirim, an artist who was born in Ankara and “came alive” in Kuzguncuk, the artistic quarter of Istanbul, where a number of creative studios are hidden down the narrow streets. The origin of Pirim’s artistic process lies in the world of Mevlana Jalaluddin Rumi, more specifically in his approach of “from one to all” — a philosophy reflected across his works. His designs capture a duality: the multiplication of the singular, and the imaginary singularity of the plural.



Pearl

Location: Villa Walls



On the wall of each villa is Pearl, an eye-catching clam-like centrepiece by Pirim. The ripple shape is reminiscent of the aquamarine waters surrounding the island, with its varied hues reflecting the true nature of the brilliant blue ocean. This installation echoes Pirim’s childhood memories, anchored in his imaginings of an island.

“My process, which started with Mevlana’s World “from one to all”, my pieces touch the lives of others with the same philosophy. As a kid, when I closed my eyes to imagine an island, the first thing that came across my eyes were blue... blue becoming lighter and lighter as it hit the shore from the deep ocean... tones of blues which Pantone couldn’t handle and right in the middle of it a pearl.. this work is a work of childhood memories... “

STUDIO MAMELUCA

Portugal & Brazil



Founded in 2012 by Nuno FS and Ale Clark, Studio Mameluca uses the medium of design to tell stories, generate questions, uncover emotions and facilitate discovery through our senses. This visionary project began in Brazil and is currently based in Portugal.

The founders of Studio Mameluca believe that contemporary design transcends basic survival needs and leads us to a poetic design of new information and experiences. Through their work, they constantly analyse the essence of “man”, both individually and in the impact he has on his surroundings.

Brazilian-born Ale Clark is inspired by the art of her homeland and, above all, by her grandmother, Lygia Clark, who has had a profound influence on her artistic life. Nuno FS, who is of Portuguese origin, forayed into the creative world through photography and sculpture, influenced by his father, the artist José Miguel Franco de Sousa.

“One egg, one organism, one life,
one world.”



One Egg | One World
Location: Vandhoo Beach

This unique installation is inspired by the egg of the White Tern seabird, found across the world's tropical oceans. The White Tern lays its single egg in a joint among small branches, instead of a nest. By doing so, it protects the egg from predators like crows which avoid perching on small branches.

In this way, the White Tern has learned to use its environment to survive, thrive and ensure the continuation of its species. Thus, One Egg | One World represents the integral connection between each living being and the world around them.

The piece also inspires us to contemplate the fragility of life and our planet. As you move from observing the egg to climbing and entering it, you will journey through feelings of instability, balance and calm.

This work was manufactured by Studio Mameluca, with local production managed by Maldivian artist Kurahaa Rappe.

AURELIE HOEGY

France

Aurelie Hoegy embodies the fascinating essence of movement through her collections of furniture. Guided by the flow of fibres, she blurs and stretches the lines between art and design. Each object seems like a wild choreography in space, or a graceful aerial ocean wave.

Stretching the lines between art and design, Hoegy transcends boundaries by liberating our sense of limitations. Her unique vision of handmade creation, combined with her choice of the highest-quality sustainable materials, makes her hybrid approach and work true design haute couture.

An open-minded creative whose innate curiosity leads to exploration, research and evolution, Hoegy has a master's degree in Contextual Design from the Design Academy Eindhoven. Her project, "The Dancers", was presented at Palais de Tokyo in Paris, and her series of gnarled chairs won the 2015 Rado Star Prize and the 2016 Pure Talent Contest.



JOALI Hammock
Location: Vandhoo

This cosy yet elegant chaise lounge is made with rattan liana, one of the world's longest natural fibres. For this haute couture design piece, Hoegy took inspiration from our island and its sumptuous white sand shapes, formed by the infinite movement of the Indian Ocean. The elegant choreography of fibres forms a graceful aerial ocean wave.

Mirroring the undulating waves, the sculptural seating is meticulously crafted from rattan liana sourced from Indonesian jungles. Hoegy let herself be guided by the inherent curves of the fibre to finally fold it in the style of a textile drapery.

"Letting myself be inspired by the curves of JOALI island and its sumptuous white sand formed by the infinite movement of the Indian Ocean."

MAJA ROHWETTER

Germany

Maja Rohwetter expresses the beauty of nature through both digital and analogue forms. Using the interface of augmented reality, she transfers her visual worlds into an expanded dimension, where animated 3D objects—originating from painting and collage—unfold. In this in-between space, viewers simultaneously become users.

In her collages, Rohwetter composes ‘mixed realities’ from bits and pieces of her analogue studio practice as a painter and digitally generated forms.

After studying philosophy, art and Romance languages, Rohwetter studied Fine Arts at the Berlin University of the Arts and the Royal College of Fine Arts in Stockholm. She is now based in Berlin. Her work is displayed in galleries in Europe, Scandinavia, the UK and the USA. In addition to painting, she teaches media design and media theory.



Augmented Reality - Contingencies
Location: Art Studio Garden

This augmented reality installation opens a portal to a dimension between analogue and digital realms. Embedded in the actual space of the venue is a sound-immersive, walkable landscape, unfolding animated 3D objects with origins in painting and collage.

The title refers to sociologist Niklas Luhmann's definition of contingency, which denies an absolute truth of reality. Rohwetter raises questions about the fleetingness and constructedness of our reality. To what extent does digital space present itself to us as reality? How real is the reality that is perceived via a display?

Contingencies is an invitation to abandon the “safe distance” from art. Through Rohwetter's unique visual language, you become more than a viewer — you become a user, involved in image production through interactive participation.

“I find the beauty of nature in digital forms, at the same time, the beauty of nature leads me to find a translation for it, digital and analogue...”

JEANNE SUSPLUGAS

France



The visionary work of Jeanne Susplugas offers a reflection, not devoid of humour and even cynicism, on the ills of modern society. She holds a degree in Art History from the University of Paris I Panthéon-Sorbonne and has had exhibitions all over the world. Her works have been shown in places such as the KW in Berlin, the Villa Mediceis in Rome, and the Palais de Tokyo in Paris.

Day Dreams - Virtual Reality

Location: Living Room

Embark on a maze-like journey into the brain, through thoughts rendered by illustration. Using the magic of virtual reality, this exploration takes place in a brain box with neurones and synapses for an intimate, fierce and unique encounter. Each person can experience their own psychological journey, with several unfolding narratives, soundscapes and trajectories.

Inspired by JOALI, Susplugas has added specific Maldivian elements to transport spectators to an enchanted world filled with joy, wellness, beauty and nature. It is impossible to emerge from this realm indifferent and unchanged!



“Is a maze-like journey into the brain through thoughts rendered by illustration.”



GABRIELA NOELLE GONZÁLEZ

United States

Gabriela Noelle, a Cuban-American artist, creates whimsical sculptures inspired by childhood wonder. Her acrylic pieces captivate with shifting colours and light, exploring depth and perspective through dynamic layering.

Gabriela blends materials like leather, feathers, geodes, and crystals, merging modern elegance with organic beauty. Her diverse work includes interactive objects and public installations, reinterpreting childhood playfulness for a sophisticated audience.

Wishing Palm

Location: Mura Beach



Her sculpture, featured in front of La Joie, invites children to enjoy ice cream and interact with it. The piece, inscribed with: "I was born from a dream of a child, To one day unite mankind and wild. My shadows play and dance in the sun, A symbol of hope that your dream has begun," symbolises hope and dreams.

"Tap into your inner child and dream of an imaginary friend; within that playful spirit lies the essence of boundless creativity and joy"

DAMIEN POULAIN

France

Damien Poulain is a Paris-based artist whose work moves freely between design, architecture, and public space. His practice is shaped by influences as diverse as Shintoism, heraldic and tribal symbols, along with elements of contemporary digital culture. From these sources he creates bold systems of geometry and colour, intended as a universal language that questions how people relate to each other, to their surroundings, and to the wider mystery of existence.

Poulain's projects are nomadic and contextual, always created in response to a particular place and moment. His imprint spans from monumental interventions in the public realm to intimate paintings, textiles, and sculptures. Across these formats, he explores the power of visual codes to build connections, spark dialogue, and invite reflection on shared beliefs. Through this work, Poulain hopes to foster cross-cultural engagement and community, spreading what he calls a universal message of love, beauty, and possibility.



Flower Stripes
Location: Pétanque Court



Poulain's universal language of colour and geometry takes shape in Flower Stripes, a vivid reimagining of JOALI Maldives' pétanque court. The space becomes a radiant canvas, at once playful and contemplative, embodying his pursuit of art as a communal dialogue and an open invitation to see beauty in shared spaces.

“This project began as a dialogue with its space. My installation was created to inhabit and respond to its surroundings, embracing both the possibilities and the constraints of the site.”

BENEDETTA MORI UBALDINI

Italy

Benedetta Mori Ubaldini is an Italian sculptor celebrated for her ethereal wire mesh creations. Born in Milan, she studied Fine Art in London before returning to Italy, where she continues to develop a practice defined by delicacy, symbolism, and poetry.

Her signature technique begins with flat sheets of rolled wire mesh, gradually shaped by hand. Twisting and joining each seam, she forms seamless three-dimensional works that seem to hover between presence and absence. Light flows through their transparent structures, creating shifting plays of shadow that heighten their dreamlike quality.

Animals are a recurring theme in her work, chosen both for their aesthetic beauty and for the symbolic qualities they hold in human culture and imagination. Each sculpture is a narrative in space, infused with her own words: *“I like them to be evocative, symbolic and poetic.”*

Appearing almost like fleeting apparitions suspended between sky and land, Ubaldini’s Spirit of Maakana brings two soaring herons into delicate flight inside Mura Bar. Their spectral presence, both graceful and poetic, channels her fascination with animals as symbols of wisdom and freedom, while also paying homage to the living rhythms of JOALI Maldives.



Spirit of Maakana
Location: Mura Bar



“The Maldives, and JOALI Maldives in particular, inspired me with its unique harmony of nature, art, and culture. The two flying herons I created symbolise grace, freedom, and the natural elegance of seabirds, while also expressing an artistic dialogue with the island’s landscape.”

JOSH GLUCKSTEIN

United Kingdom

Josh Gluckstein is a London-based wildlife artist whose practice places sustainability at its core. Since 2021, he has worked exclusively with recycled cardboard to create extraordinary life-size animal sculptures that capture the emotion, presence, and raw beauty of the natural world. What began as an experiment during lockdown has since evolved into a distinctive, zero-waste practice.

Cardboard, with its countless tones, textures, and layers, offers Gluckstein the perfect medium to render fine details and expressive forms. Each work demonstrates how the overlooked and discarded can be transformed into something meaningful, blending artistry with environmental responsibility.



Green Turtle Coral Garden

Location: Living Room

Inspired by extensive travels and volunteer work across Asia, East Africa, and South America, Gluckstein seeks to reflect both the vitality and vulnerability of the species he has encountered in the wild. His ambition is not only to celebrate these creatures but also to raise awareness of their fragility, supporting endangered species through partnerships and charitable contributions.

Pastel and aquatic tones sweep across Gluckstein's Green Turtle Coral Garden at JOALI Maldives. A turtle glides serenely over a reef of recycled forms, inviting reflection on both the fragility of coral ecosystems and the resilience of marine life in the Indian Ocean.

“Crafted from recycled cardboard, this sculpture celebrates the beauty and fragility of our oceans. Inspired by the abundant marine life of the Maldives, it reflects the importance of sustainability and protecting endangered species to safeguard their future.”

IMMERSIVE
ART
C O N C E P T

JOALI

RELATED
NEWS

silverkris.com

buro247.ru

escape.com

forbes.com

edition.cnn.com

elle.ru

gayatravel.com

herworld.co.id

homejournal.com

luxurywatcher.com

countrylife.co.uk